

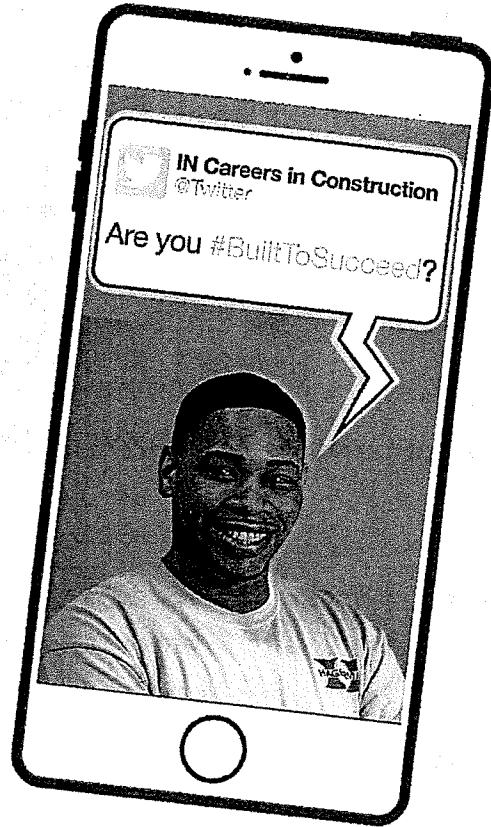
BUILT TO SUCCEED

IN Careers in Construction

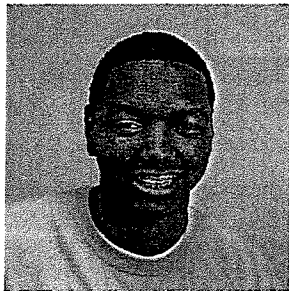
Learn more about careers in construction.



An apprenticeship program is a great opportunity. It is basically free. And, you get paid while learning. After you are done, you will have earned a degree. It is a great, challenging career to get into.



www.builttosucceed.org

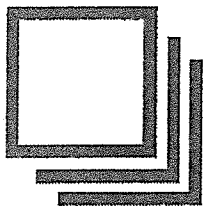


I feel like I made one of the best decisions of my life, though I am not done, it's just the beginning. I feel very confident and excited for the future.

Indiana Careers in Construction Association

317-981-7835

One of my friends who was an operator told me to apply because he said that females tend to be better operators.



BUILT TO SUCCEED

IN Careers in Construction

www.builttosucceed.org

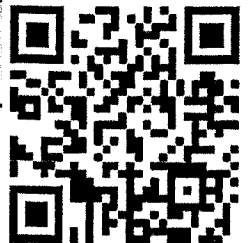
Connect with us and learn more!

Twitter: @INConstCareers

Instagram: @inconstcareers

Facebook: Indiana Careers in Construction

#builttosucceed



Laborers' Local #41
550 Superior Avenue • Munster, IN 46321
219-924-7922

Laborers' Local #81
3502 Enterprise Ave. • Valparaiso, IN 46383
800-858-7631

Laborers' Local #120
1520 E. Riverside Drive • Indianapolis, IN 46202
317-634-8551

Laborers' Local #204
401 Poplar Street • Terre Haute, IN 47807
812-232-0989

Laborers' Local #213
5700 S. Anthony Blvd. • Fort Wayne, IN 46806
260-744-5255

Laborers' Local #274
1734 Main Street • Lafayette, IN 47904
765-742-4876

200 W. Haven St. • Kokomo, IN 46901
765-457-4453

Laborers' Local #561
951 North Park Drive • Evansville, IN 47710
888-463-8646

Laborers' Local #645
23698 Western Avenue • South Bend, IN 46619
574-287-2967

Laborers' Local #741
7745 S. Fairfax Road • Bloomington, IN 47401
812-824-2605

2905 State St, Suite B. • Columbus, IN 47201
812-372-2211

207-B Walnut St. • Lawrenceburg
812-537-5128

Laborers' Local #795
1213 State Street • New Albany, IN 47150
812-944-6473

Laborers' Local #1112
3520 S. Meeker Ave. • Muncie, IN 47302
765-282-5815



LU #41
Munster, IN

LU #561
Evansville, IN

LU #81
Valparaiso, IN

LU #645
South Bend, IN

LU #120
Indianapolis, IN

LU #741
Bloomington, IN

LU #204
Terre Haute, IN

LU #795
New Albany, IN

LU #213
Fort Wayne, IN

LU #1112
Muncie, IN

LU #274
Lafayette, IN

LIUNA!

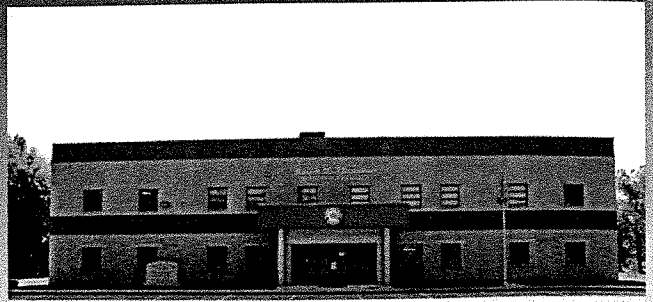
www.liuna.org





Bedford, Indiana

Construction of the Indiana Laborers' Training Trust Fund was completed early in 1974 and soon after became operational with the first live-in training program in June of that year. The training facility, which houses the administrative office, is located on 170 acres consisting of fields and a wooded area and serves as excellent training sites developed for our hands-on job skill training programs. The commons building includes classrooms, a library, trainee lounge, dining room, kitchen and dorm rooms on each level. The lower level contains a large instructional area, a recreation room with pool tables and other recreational equipment along with shower rooms, lockers, etc. There are multiple laboratory type buildings that are located throughout the property to allow for continuation of classes during inclement weather conditions. The Indiana Laborers' Training Trust Fund has the facilities to provide indoor hands-on instruction of all classes when necessary.



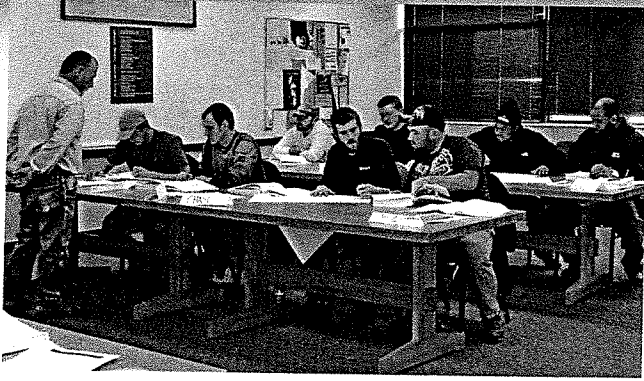
Logansport, Indiana

The Indiana Laborers' Training Trust Fund's northern training site, Tow Path Ranch, is located eight miles west of Logansport. Tow Path Ranch is situated on 234 acres which includes a 14,000 sq. ft. instructional building consisting of a large training lab, classrooms, offices, etc. This site provides the same core curriculum as the Bedford site, however, overnight living and dining accommodations are provided off site.

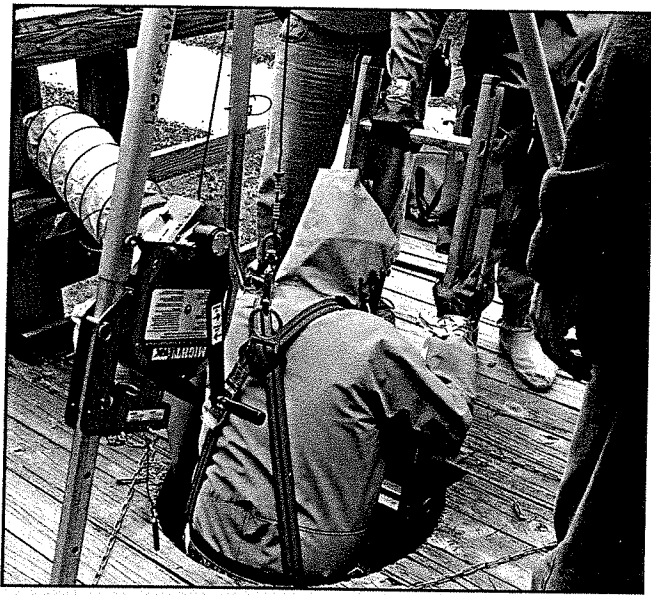
The Indiana Laborers' Training Trust Fund is a fully staffed facility which includes full-time, well-trained and experienced instructors in addition to an Administrative staff, the Environmental Safety Specialist, Apprenticeship Coordinator and Site Coordinators.

For more information on how to apply:
Indiana Laborers' Training Trust Fund
Sean Coakley, Director

Jeremy Brewer, Apprenticeship Coordinator • Steven Smith, Asst. Apprenticeship Coordinator
P.O. Box 758 • Bedford, IN 47421
812-279-9751 • 800-742-4086 • www.indianalaborerstraining.org



The Indiana Laborers' Training Trust Fund was established in April 1968 through collective bargaining initiated by the State of Indiana District Council, Laborers' International Union of North America and Contractor Association representatives to provide training for laborers employed in the construction industry to upgrade their skills and to provide trained new entry workers for the industry. Training and education programs began in the Fall of 1968 by utilizing existing area vocational schools. Similar training continued through 1969 in various locations throughout Indiana in such classes as: Basic Education, Blueprint Reading, Cutting and Burning and Welding. The first hands-on job skill training program provided entirely by staff of the Indiana Laborers' Training Trust Fund began in 1970 and has continued through the present with more than seventy thousand (70,000) individuals enrolling into various training programs provided by the Indiana Laborers' Training Trust Fund.



TERM OF APPRENTICESHIP

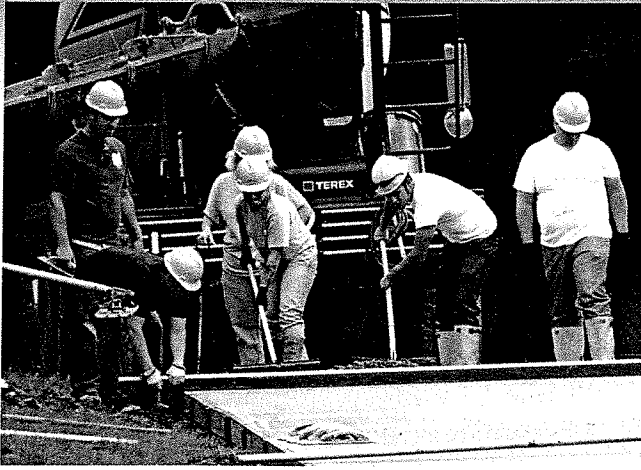
The term of apprenticeship shall be 4000 hours of diversified work and on-the-job learning. The work process schedule for Construction Craft Laborer apprentices must address general skills such as, site/project preparation and maintenance; tools, equipment and materials and safety. In addition, apprentices will gain experience in each of the follow specific skill groups: Environmental Remediation, Building and related construction and Heavy Highway and Utility Construction.

QUALIFICATION-ELIGIBILITY REQUIREMENTS

The minimum qualifications for applicants are:

1. Not less than 18 years of age. Proof of age may be required.
2. Physically able to perform the work of the trade.
3. A reading, understanding, writing and communicating ability as would enable the applicant to perform the tasks of the Construction Craft Laborer in a safe manner and comprehend the subject matter taught in related instruction.
4. If applicant has not completed high school or its equivalent, the applicant must, if accepted into the program, pursue his or her GED within the first year of the program.
5. Possess a current drivers license.
6. Eligible to work in the United States.
7. Drug testing will be required.

The Indiana Laborers' Apprenticeship program and all curriculum provided by the Indiana Laborers' Training Trust Fund is approved by the Veterans Administration.



APPRENTICE WAGES AND WAGE PROGRESSION

Apprentices shall be paid a progressively increasing schedule of wages consistent with skills and knowledge acquired. The rate for each period of the apprenticeship is expressed as a percentage of the skilled Construction Craft Laborer journeyworker rate specified in the collective bargaining agreement. The approximate time interval for each period is indicated.

The Joint Apprenticeship and Training Committee hereby establishes apprenticeship hours completed as the basis for wage progression. Apprentices shall receive the full fringe benefit package but shall receive wages based on the following schedule:

1st period	0-1000 hrs 75% of journeyworker rate
2nd period	1001-2000 hrs 85% of journeyworker rate
3rd period	2001-3000 hrs 90% of journeyworker rate
4th period	3001-4000 hrs 95% of journeyworker rate

The committee, or its designated representatives, shall receive and evaluate records and reports concerning an apprentice's progression to the next wage level approximately two weeks prior to the new advancement level. Notification by the Committee, or its designated representatives, concerning wage progression will be submitted to the Union, Employer and apprentice in writing prior to implementation of the new wage rate.



RELATED INSTRUCTION

The construction industry demands construction craft laborers to use tools, equipment and procedures that require specialized training. To meet their needs and demands, the Indiana Laborers' Apprenticeship Program requires all apprentices to successfully complete a minimum of 432 hours of classroom and hands-on training. A total of 144 hours of related instruction must be completed each year for the apprentice to progress through the program.

Curriculum developed and implemented by the Indiana Laborers' Training Trust Fund includes but is not limited to the following courses:

- Asbestos Abatement
- Asphalt Placement
- Basic Construction Math
- Certified Flagger
- Concrete Technology
- Confined Space
- Cutting/Burning/Welding
- General Construction
- Hazardous Waste
- Hoisting & Rigging
- Hydro-Mobile Scaffolding
- Infection Control Risk Assessment (ICRA)
- JLG & Rough Terrain Forklift (MCAA)
- Lead Abatement
- Mason Tending
- OSHA Safety 10 hr. & 30 hr.
- Pipelaying, Shoring and Laser
- Print Reading (Building & Highway)
- Scaffold Orientation & Safety
- Transit Level & Grade Checking

ANNUAL SEMINARS IN UNION LEADERSHIP MANAGEMENT TRAINING

To stay in line with new technology, regulations, procedures and safe work practices, the Indiana Laborers' Training Trust Fund is constantly revising and updating their curriculum to meet the needs of the construction industry. The Board of Trustees and staff of the Indiana Laborers' Training Trust Fund look forward to these challenges by responding to the ever changing needs of the construction industry by providing training and services to expand these skills, productivity and safety of the Member and the Organized Construction Industry.

Union Building Trade	1st year apprentice wage	Journeyman Wage	Benefits Package	Apprenticeship	Assoc. Degree/Certification
Boilermakers	\$26.97	\$38.53	+ benefits (medical & retirement)	4-year program	certifications
Bricklayers	\$20.82	\$36.24	+ benefits (medical & retirement)	4-year program	assoc./cert.
IKORCC - Carpenters	\$21.37	\$35.61	+ benefits (medical & retirement)	4-year program	assoc./cert.
IKORCC - Millwrights	\$21.00	\$35.00	+ benefits (medical & retirement)	4-year program	assoc./cert.
IKORCC - Floor Coverers	\$20.08	\$33.47	+ benefits (medical & retirement)	4-year program	assoc./cert.
Electricians - Inside Wireman	\$18.80	\$40.20	+ benefits (medical & retirement)	5-year program	assoc./cert.
Electricians - Telecommunications	\$19.65	\$35.76	+ benefits (medical & retirement)	3-year program	assoc./cert.
Elevator Constructors	\$27.65	\$55.30	+ benefits (medical & retirement)	4-year program	certifications
Heat & Frost Insulators	\$16.35	\$35.70	+ benefits (medical & retirement)	4-year program	assoc./cert.
Ironworkers	\$21.45	\$35.45	+ benefits (medical & retirement)	4-year program	assoc./cert.
Laborers - Construction Trades	\$20.43	\$27.24	+ benefits (medical & retirement)	4-year program	certifications
Laborers - Heavy Civil Highway	\$21.38	\$28.50	+ benefits (medical & retirement)	3-year program	certifications
Operating Engineers	\$30.42	\$40.55	+ benefits (medical & retirement)	3-year program	certifications
IUPAT - Painters & Drywall Finishers	\$17.71	\$29.52	+ benefits (medical & retirement)	3-year program	certifications
IUPAT - Glaziers	\$19.15	\$31.92	+ benefits (medical & retirement)	4-year program	assoc./cert.
Plumbers, Steamfitters & HVACR Tech	\$21.49	\$42.97	+ benefits (medical & retirement)	4-year program	assoc./cert.
Roofers	\$17.28	\$28.80	+ benefits (medical & retirement)	5-year program	assoc./cert.
OPCMIA - Plasterers & Cement Masons	\$22.40	\$29.89	+ benefits (medical & retirement)	4-year program	certifications
Sheet Metal Workers	\$22.50	\$40.91	+ benefits (medical & retirement)	3-year program	assoc./cert.
Sprinklerfitters	\$20.38	\$41.65	+ benefits (medical & retirement)	5-year program	certifications

* Wage and benefit packages are subject to change in accordance with negotiated CBAs.

** Wage and benefit packages reflected in this document represent information for central-Indiana